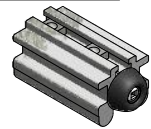


# C-101HD IN-TRACK DOOR STOP

## INSTRUCTION SHEET



### PARTS LIST



C-101HD IN-TRACK DOOR STOP C/W BUMPER, SET SCREWS & NUTS.

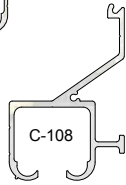
### TRACK COMPATIBILITY



C-104



C-975



C-108

C-101HD IN-TRACK DOOR STOP IS USED TO STOP THE HANGER INSIDE THE TRACK THUS STOPPING THE DOOR FROM STRIKING THE JAMB OR TO RESTRICT THE DISTANCE THE DOOR WILL TRAVEL. COMPLETELY CONCEALED IN-TRACK STOP WITH SET SCREWS FOR SECURING. IDEAL FOR C-108 TRACK SYSTEMS WHEN FASCIA IS NOT BEING USED.

### INSTRUCTIONS:

#### STEP 1

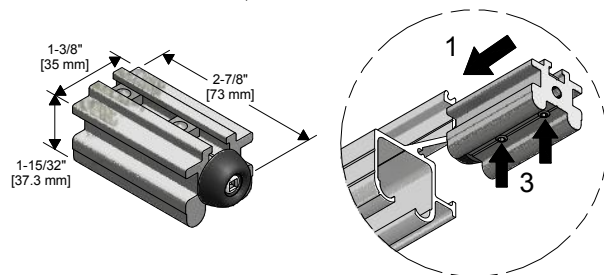
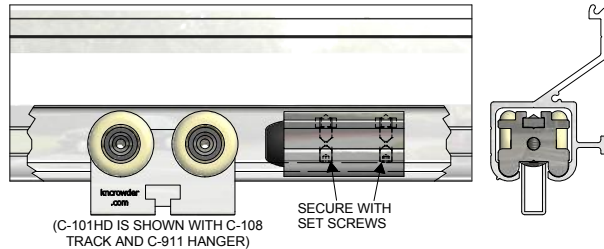
C-100HD DOOR STOP MUST BE INSTALLED FROM EITHER END OF THE TRACK. THEREFORE IF ENDS ARE NOT ACCESSIBLE, SLIDE STOP INTO TRACK BEFORE SECURING TRACK TO HEADER.

#### STEP 2

PLACE THE DOOR IN THE CLOSED POSITION, OR THE REQUIRED STOPPING LOCATION. MARK INSIDE TOP FACE OF TRACK IN LINE WITH THE EDGE OF HANGER OR WHEELS (WHICH EVER COMES FIRST.)

#### STEP 3

PLACE C-101HD DOOR STOP AT REQUIRED LOCATION AND SECURE TO TRACK WITH SET SCREWS PROVIDED IN THE STOP USING A 1/8" ALLEN KEY.



WEBSITE: [www.kncrowder.com](http://www.kncrowder.com)  
E-MAIL: [customerservice@kncrowder.com](mailto:customerservice@kncrowder.com)

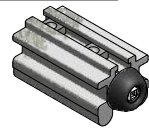
**K.N. CROWDER MFG. INC.**  
1220 BURLOAK DRIVE  
BURLINGTON, ONTARIO, CANADA, L7L 6B3  
TELEPHONE: 905-315-9788  
FAX: 905-315-8090  
TOLL FREE FAX: 1-800-567-0123  
**K.N. CROWDER INC.**  
210 EIGHTH STREET SOUTH  
LEWISTON, NEW YORK, U.S.A. 14092  
TELEPHONE: 1-716-754-8247  
TOLL FREE FAX: 1-800-567-0123

# C-101HD IN-TRACK DOOR STOP

## INSTRUCTION SHEET



### PARTS LIST



C-101HD IN-TRACK DOOR STOP C/W BUMPER, SET SCREWS & NUTS.

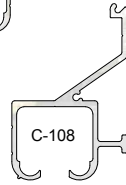
### TRACK COMPATIBILITY



C-104



C-975



C-108

C-101HD IN-TRACK DOOR STOP IS USED TO STOP THE HANGER INSIDE THE TRACK THUS STOPPING THE DOOR FROM STRIKING THE JAMB OR TO RESTRICT THE DISTANCE THE DOOR WILL TRAVEL. COMPLETELY CONCEALED IN-TRACK STOP WITH SET SCREWS FOR SECURING. IDEAL FOR C-108 TRACK SYSTEMS WHEN FASCIA IS NOT BEING USED.

### INSTRUCTIONS:

#### STEP 1

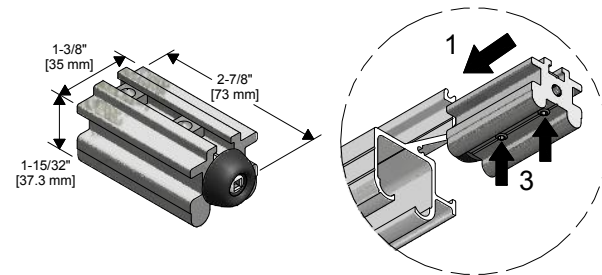
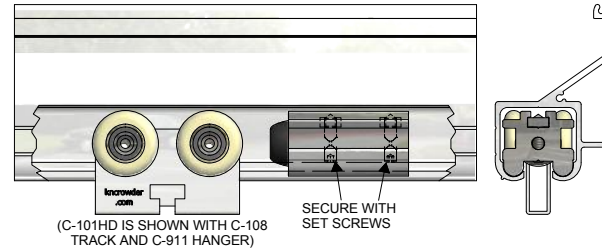
C-100HD DOOR STOP MUST BE INSTALLED FROM EITHER END OF THE TRACK. THEREFORE IF ENDS ARE NOT ACCESSIBLE, SLIDE STOP INTO TRACK BEFORE SECURING TRACK TO HEADER.

#### STEP 2

PLACE THE DOOR IN THE CLOSED POSITION, OR THE REQUIRED STOPPING LOCATION. MARK INSIDE TOP FACE OF TRACK IN LINE WITH THE EDGE OF HANGER OR WHEELS (WHICH EVER COMES FIRST.)

#### STEP 3

PLACE C-101HD DOOR STOP AT REQUIRED LOCATION AND SECURE TO TRACK WITH SET SCREWS PROVIDED IN THE STOP USING A 1/8" ALLEN KEY.



WEBSITE: [www.kncrowder.com](http://www.kncrowder.com)  
E-MAIL: [customerservice@kncrowder.com](mailto:customerservice@kncrowder.com)

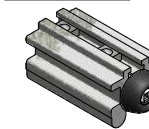
**K.N. CROWDER MFG. INC.**  
1220 BURLOAK DRIVE  
BURLINGTON, ONTARIO, CANADA, L7L 6B3  
TELEPHONE: 905-315-9788  
FAX: 905-315-8090  
TOLL FREE FAX: 1-800-567-0123  
**K.N. CROWDER INC.**  
210 EIGHTH STREET SOUTH  
LEWISTON, NEW YORK, U.S.A. 14092  
TELEPHONE: 1-716-754-8247  
TOLL FREE FAX: 1-800-567-0123

# C-101HD IN-TRACK DOOR STOP

## INSTRUCTION SHEET



### PARTS LIST



C-101HD IN-TRACK DOOR STOP C/W BUMPER, SET SCREWS & NUTS.

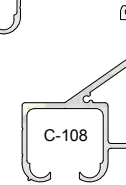
### TRACK COMPATIBILITY



C-104



C-975



C-108

C-101HD IN-TRACK DOOR STOP IS USED TO STOP THE HANGER INSIDE THE TRACK THUS STOPPING THE DOOR FROM STRIKING THE JAMB OR TO RESTRICT THE DISTANCE THE DOOR WILL TRAVEL. COMPLETELY CONCEALED IN-TRACK STOP WITH SET SCREWS FOR SECURING. IDEAL FOR C-108 TRACK SYSTEMS WHEN FASCIA IS NOT BEING USED.

### INSTRUCTIONS:

#### STEP 1

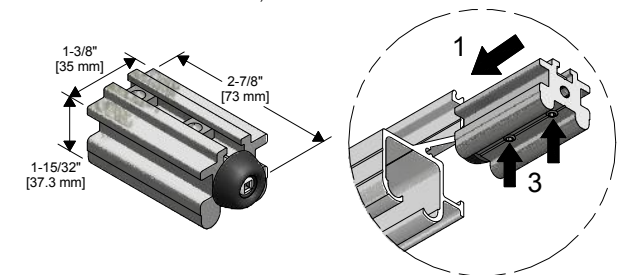
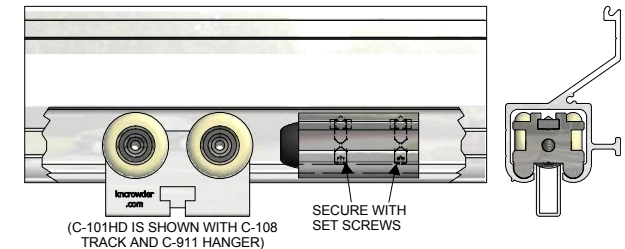
C-100HD DOOR STOP MUST BE INSTALLED FROM EITHER END OF THE TRACK. THEREFORE IF ENDS ARE NOT ACCESSIBLE, SLIDE STOP INTO TRACK BEFORE SECURING TRACK TO HEADER.

#### STEP 2

PLACE THE DOOR IN THE CLOSED POSITION, OR THE REQUIRED STOPPING LOCATION. MARK INSIDE TOP FACE OF TRACK IN LINE WITH THE EDGE OF HANGER OR WHEELS (WHICH EVER COMES FIRST.)

#### STEP 3

PLACE C-101HD DOOR STOP AT REQUIRED LOCATION AND SECURE TO TRACK WITH SET SCREWS PROVIDED IN THE STOP USING A 1/8" ALLEN KEY.



WEBSITE: [www.kncrowder.com](http://www.kncrowder.com)  
E-MAIL: [customerservice@kncrowder.com](mailto:customerservice@kncrowder.com)

**K.N. CROWDER MFG. INC.**  
1220 BURLOAK DRIVE  
BURLINGTON, ONTARIO, CANADA, L7L 6B3  
TELEPHONE: 905-315-9788  
FAX: 905-315-8090  
TOLL FREE FAX: 1-800-567-0123  
**K.N. CROWDER INC.**  
210 EIGHTH STREET SOUTH  
LEWISTON, NEW YORK, U.S.A. 14092  
TELEPHONE: 1-716-754-8247  
TOLL FREE FAX: 1-800-567-0123