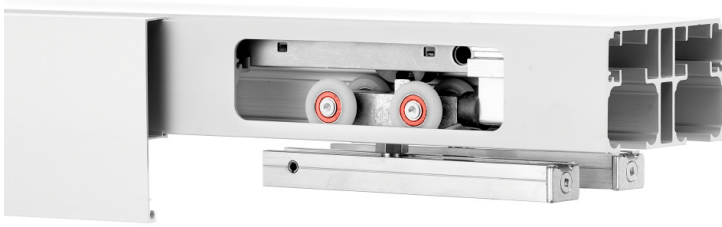


CCD-410-W



FEATURES

- 150 lbs. [68 kg] weight capacity
- Effortless opening and closing of the door with the Catch 'N' Close Closing System (for doors wider than 18 in [457 mm])
- Zero Clearance Hanger System reduces light and sound entry
- Nylon wheels and precision ball bearings provide smooth and quiet door operation
- Cycle tested for up to 150,000 cycles without fail
- ADA Compliant (Barrier-free) design
- Available in clear or black anodized, mill finish or powder coated
- For 1 3/4 in [44.5 mm] thick doors

COMPLETE 2 DOOR KIT BREAKDOWN



1 - CC-500 Double Track
x length based on kit size (e.g. 72 in [1829 mm] kit for 36 in [914 mm] wide doors)



4 - CC-410 Zero Clearance Catch 'N' Close Hangers
complete with screws and adjustment tools



4 - CC-100 Catch 'N' Close In-Track Stops
complete with set screws for friction fit



4 - Catch 'N' Close Closing Devices
complete with screws
CC-75 for doors up to 75 lbs. [34 kg]
CC-1 for doors up to 150 lbs. [68 kg]



2 - C-914 Aluminum Guide Channel
x length based on kit size (e.g. 36 in [914 mm] guide channel for 72 in [1829 mm] kit)



1 - C-913D-134 Bypass Double Guide
complete with screws

OPTIONAL

Door Locks & Pulls



Add-On Products



CC-440 Fascia x 1
x length based on required size

CC-440 Fascia x 2
x length based on required size

Customer Name

Job No./Name

Date

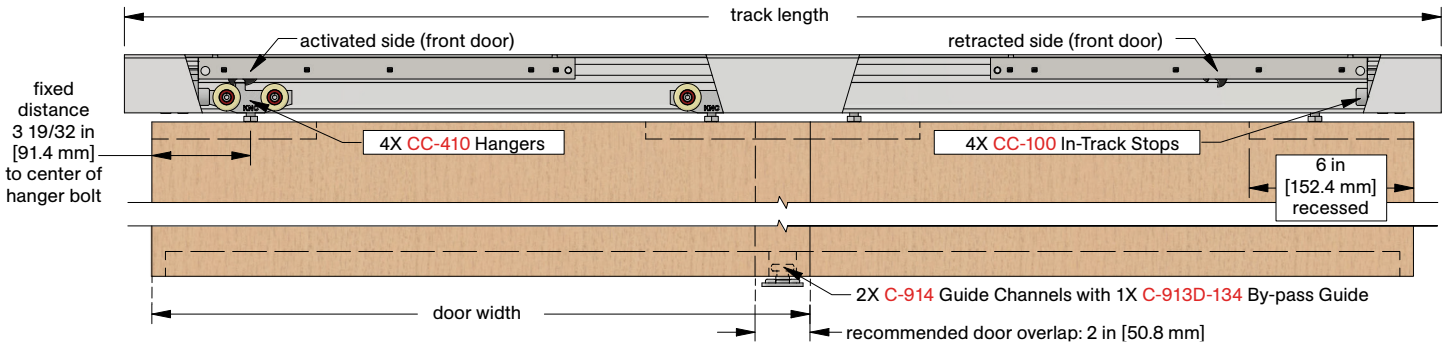
Provided By

Notes

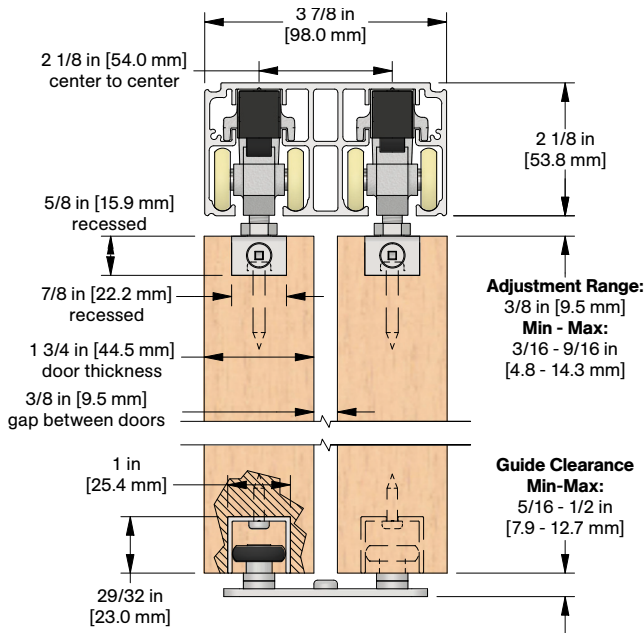
CCD-410-W



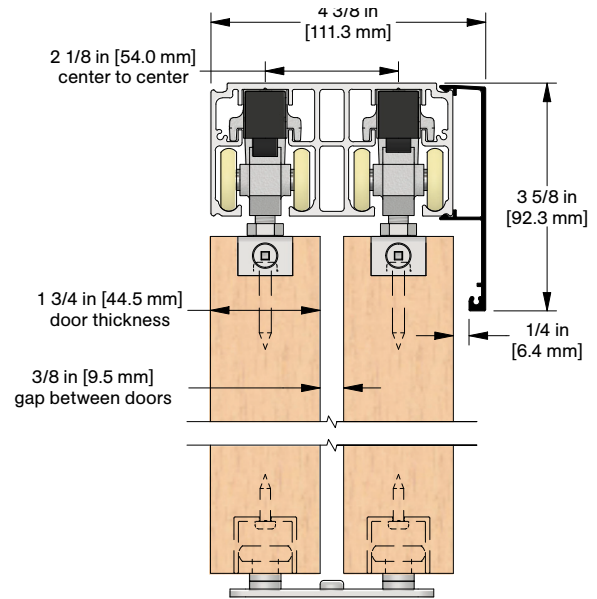
COMPLETE ELEVATION VIEW



PRODUCT DIMENSIONS



Optional CC-440 Snap-on Fascia, illustrated as solid black profile



Installation
Instructions



Customer Name

Job No./Name

Date

Provided By

Notes