

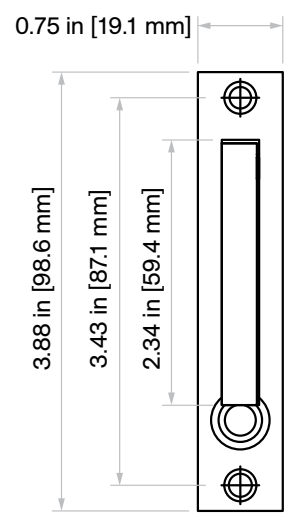
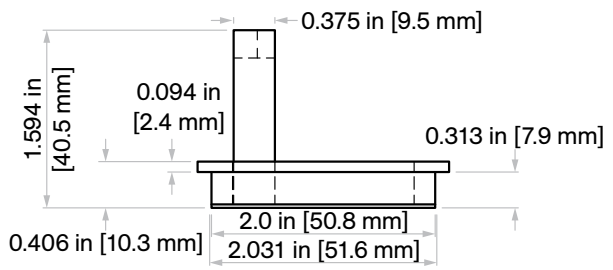
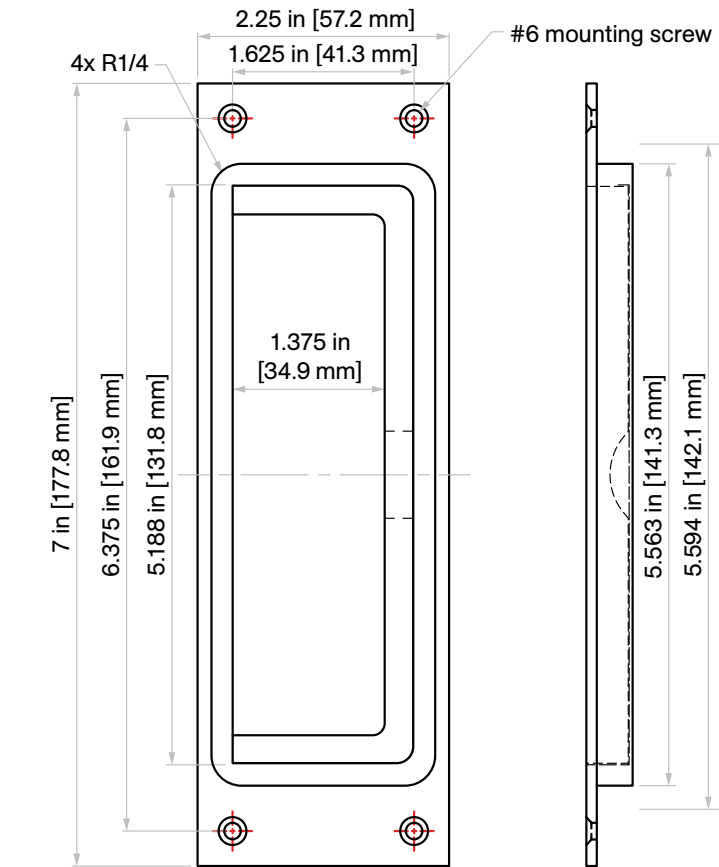
C-21-BHBH Passage Set

Installation Instructions

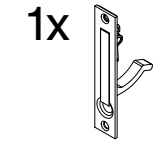
Specifications

Door Thickness: 1 3/8 in [34.9 mm] minimum

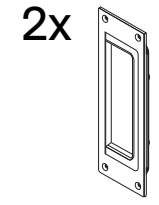
Not to scale



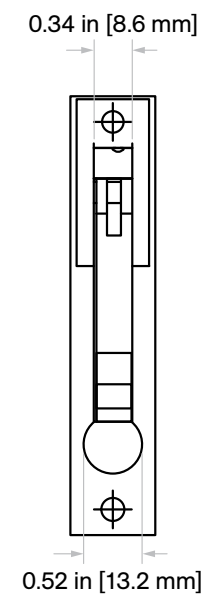
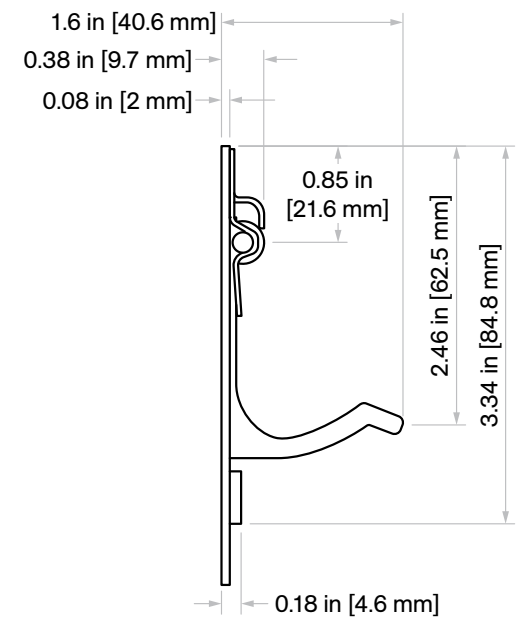
Included Components



C-21
Edge Pull Body



C-90BH
Swing-Out Handle Flush Pull



Door Prep Template

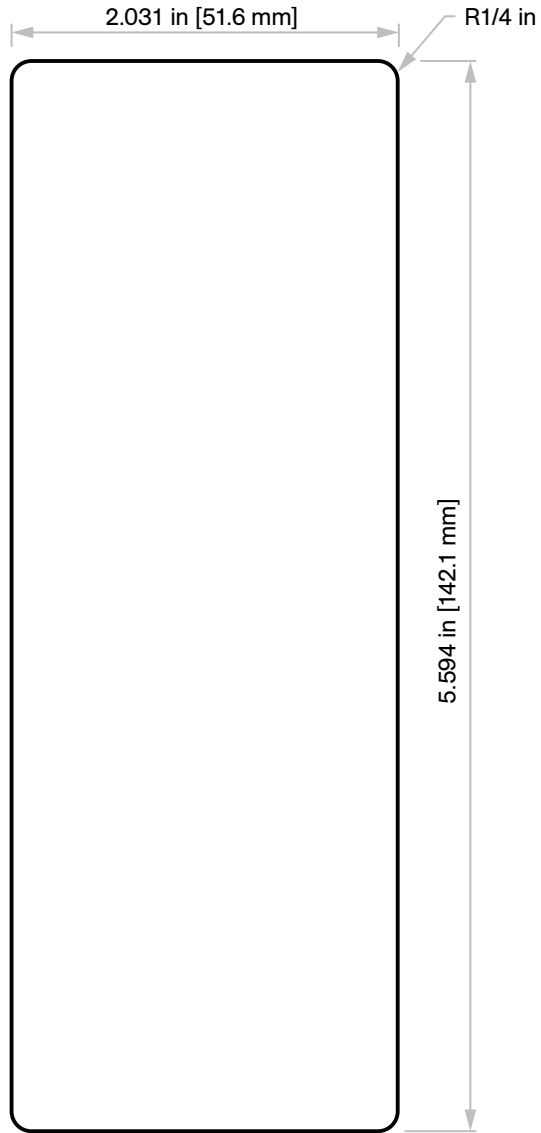
Horizontal and vertical spacing of the flush pulls is up to the end user. However, we do suggest to line up the backset with the other locks on your project.

For example: 2 in [50.8 mm], 2.5 in [63.5 mm], 2.75 in [69.8 mm], 5 in [127 mm], and 6 in [152.4 mm]

Responsibility

Door and frame manufacturers are responsible for providing adequate construction or reinforcement for proper installation of hardware shown.

C-90BH



C-21

