

# C-61 Edge Pull

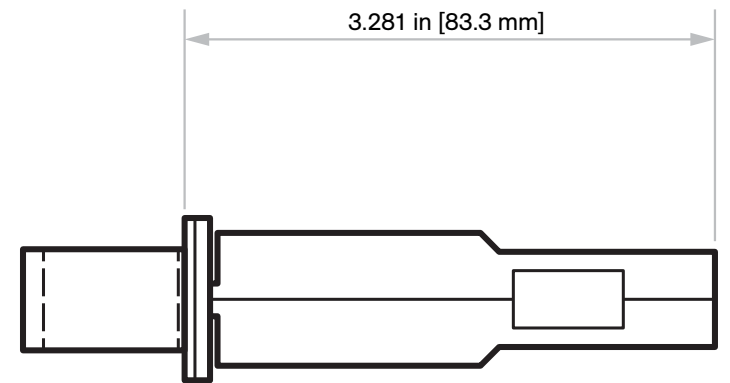
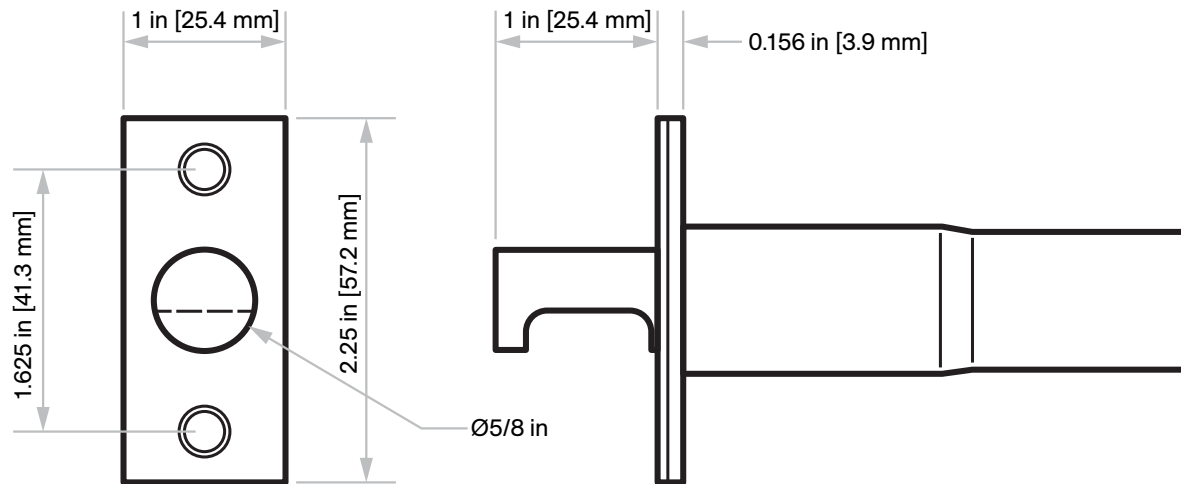
Installation Instructions

Spring Loaded Edge Pull

Can be used with a privacy set

**Door Thickness:** 1 3/8 in [34.9 mm] to 1 3/4 in [44.5 mm]

Not to scale

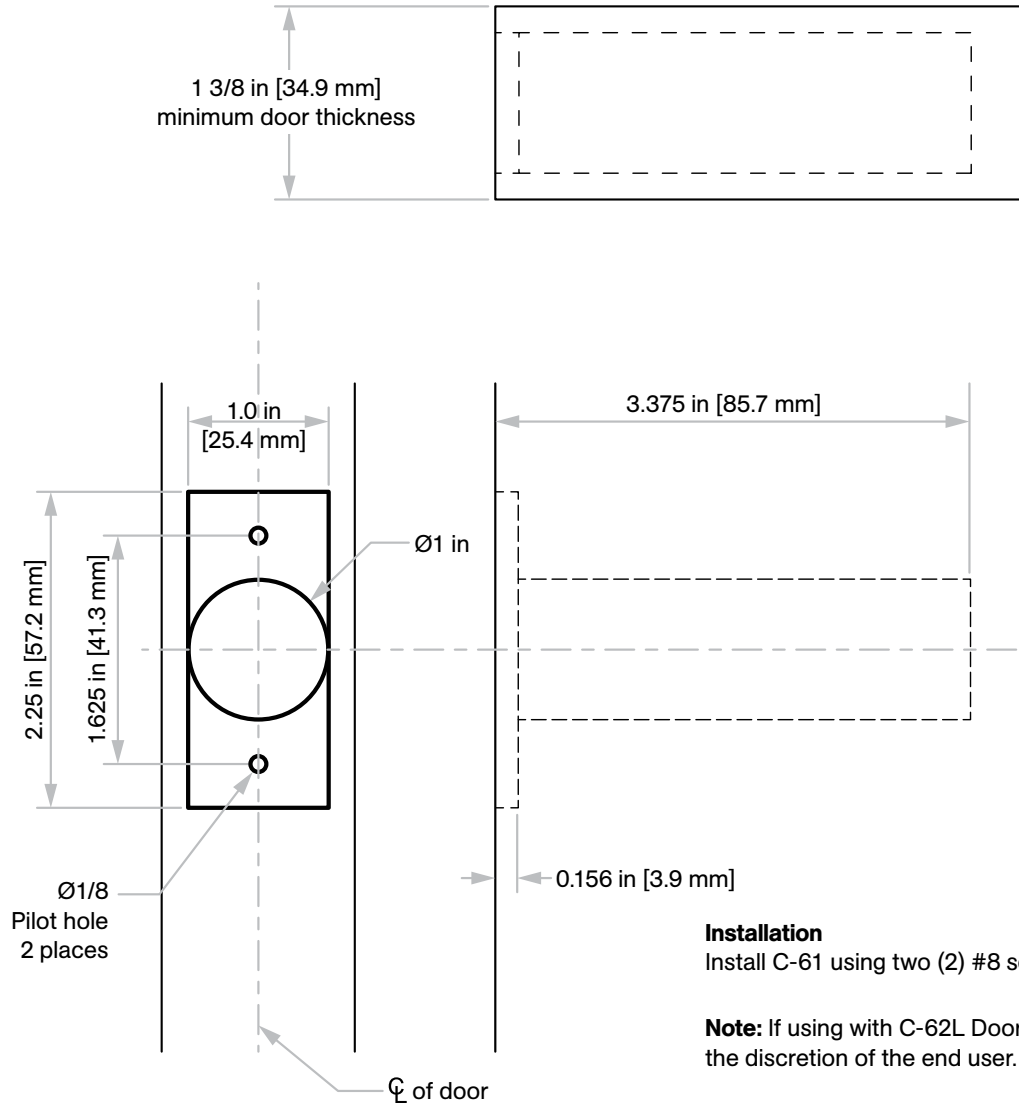


# Door Prep Template

## Responsibility

Door and frame manufacturers are responsible for providing adequate construction or reinforcement for proper installation of hardware shown.

Not to scale



## Installation

Install C-61 using two (2) #8 screws provided.

**Note:** If using with C-62L Door Lock, C-61 is mounted below the C-62L. This location is at the discretion of the end user.