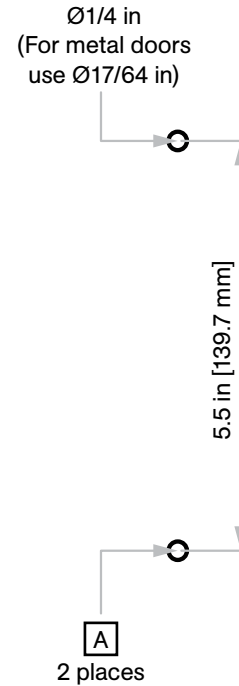
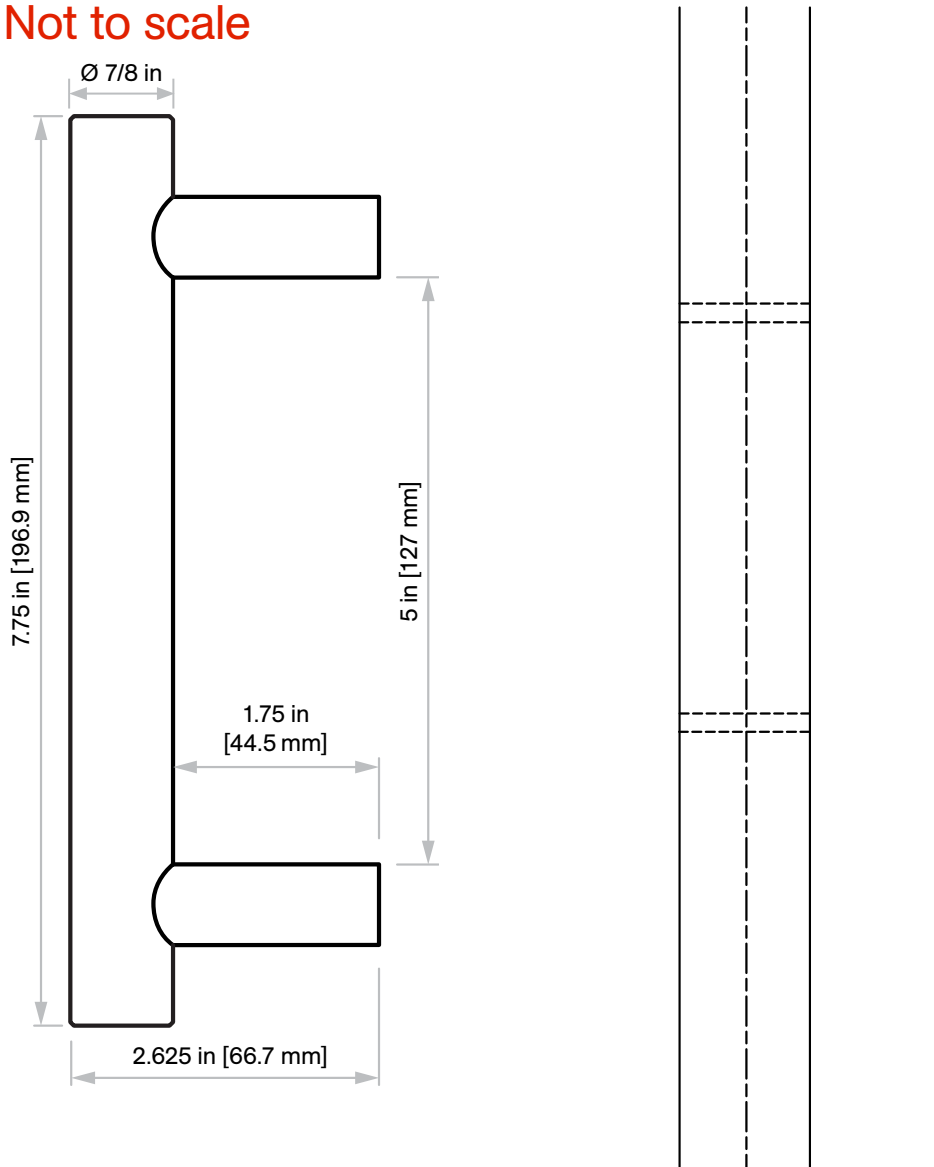


C-90SP/C-90DP Door Pulls

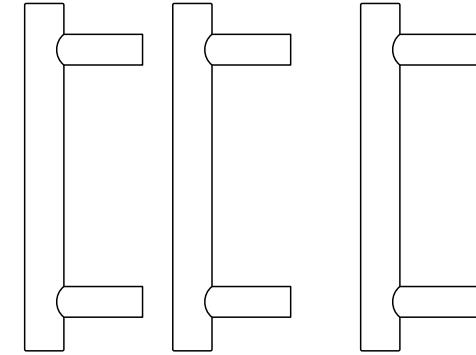
Installation Instructions

Door Thickness: 1 3/8 in [34.9 mm] to 1 3/4 in [44.4 mm]

Not to scale



Included Components



C-90DP
Back-to-Back Door Pulls

OR C-90SP
Single Door Pull

A The holes for the C-90DP Back-to-Back Door Pulls are meant to be very tight, installer can tap the cone head thru-bolts in place with rubber mallet for wood doors.