

C-91 Edge Pull

Installation Instructions

Specifications

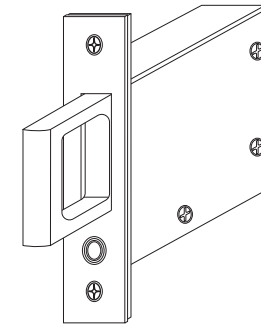
Case: Heavy gauge wrought

Armor Front: Brass, bronze, stainless

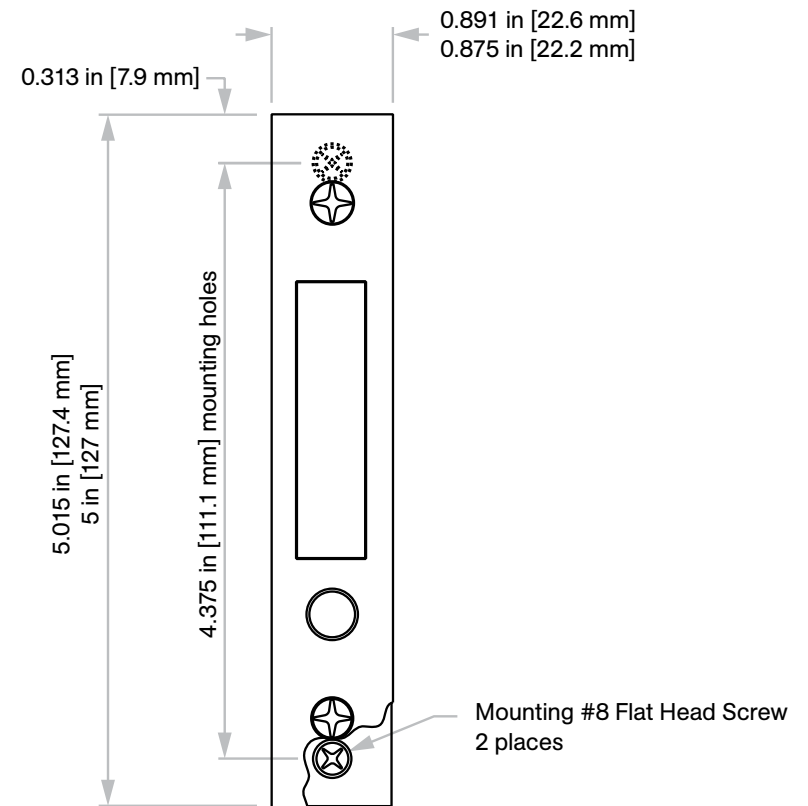
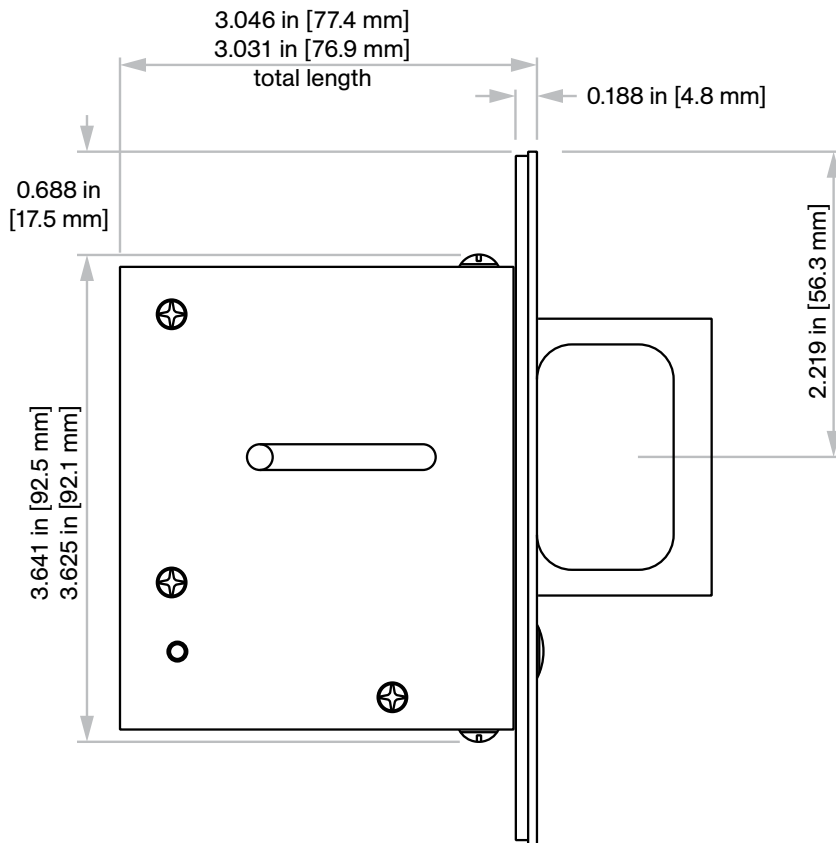
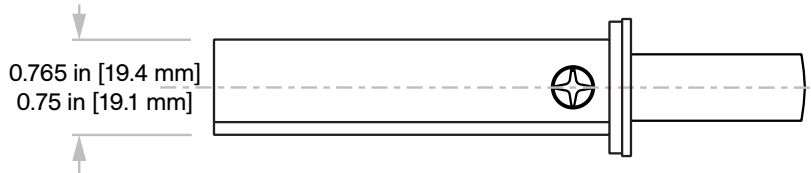
Pull: 1/2 in [12.7 mm] thick x 2 in [50.8 mm] high x 1 1/4 in [31.8 mm] throw

Door Thickness: 1 3/8 in [34.9 mm] minimum

Not to scale



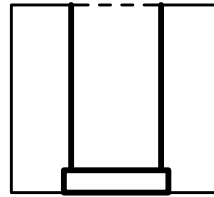
C-91
Edge Pull Body



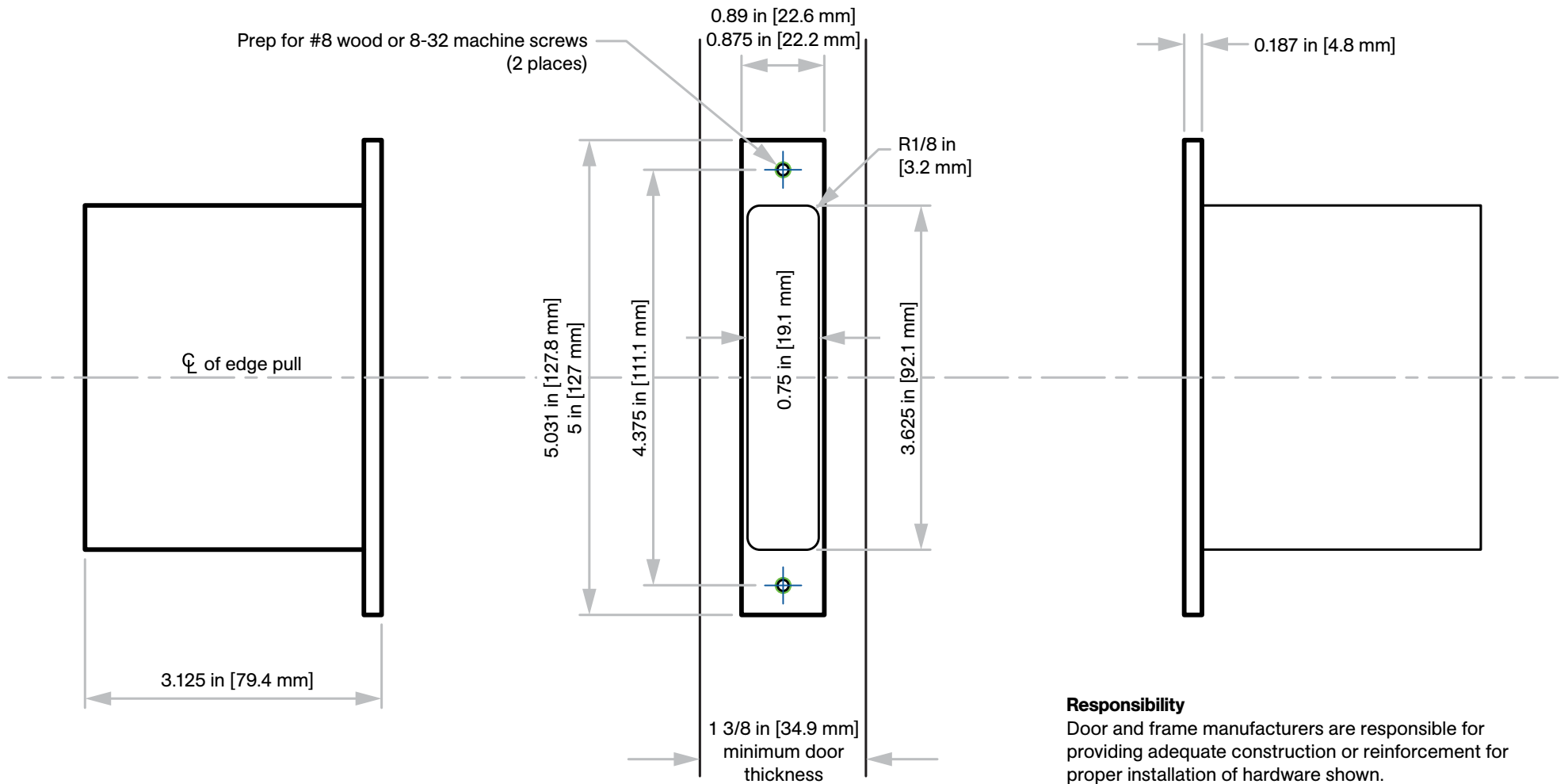
Door Prep Template

Not to scale

Inside of Door



Outside of Door



Responsibility

Door and frame manufacturers are responsible for providing adequate construction or reinforcement for proper installation of hardware shown.