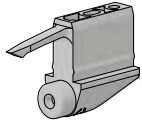


CDC-411

Instruction Sheet



Parts List

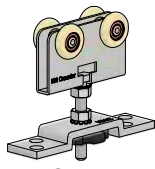


**CDC-411
Catch/Stop (2)**



**#10 x 2-1/4"
Self-Drilling Screw (2)**
[FT6]

Compatible with:



**C-411
Hanger**



C-400 Track



C-412 Track



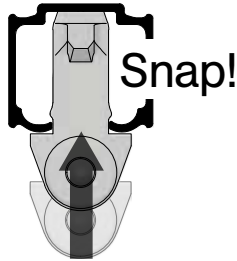
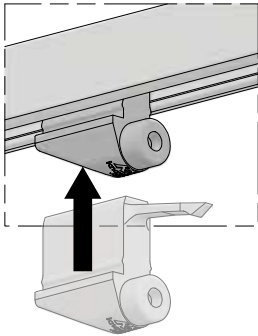
C-538 Track



C-500 Track

Step #1:

After door has been installed, snap CDC-411 Catch/Stops into each end of track with bumpers facing towards center of track. Once snapped into track, CDC-411 Catch/Stops should be free to slide within track.



Step #2:

Position door approximately 5-10 in [127-254 mm] away from final position at one end, shown right with left side. Push loose CDC-411 Catch/Stop against hanger and engage it with hanger. Bumper should be against hanger body.

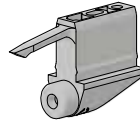


CDC-411

Instruction Sheet



Parts List

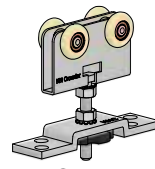


**CDC-411
Catch/Stop (2)**



**#10 x 2-1/4"
Self-Drilling Screw (2)**
[FT6]

Compatible with:



**C-411
Hanger**



C-400 Track



C-412 Track



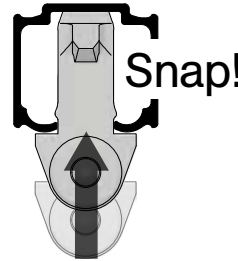
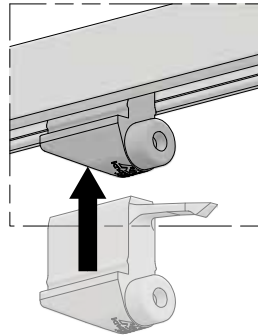
C-538 Track



C-500 Track

Step #1:

After door has been installed, snap CDC-411 Catch/Stops into each end of track with bumpers facing towards center of track. Once snapped into track, CDC-411 Catch/Stops should be free to slide within track.



Step #2:

Position door approximately 5-10 in [127-254 mm] away from final position at one end, shown right with left side. Push loose CDC-411 Catch/Stop against hanger and engage it with hanger. Bumper should be against hanger body.

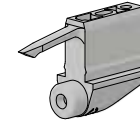


CDC-411

Instruction Sheet



Parts List

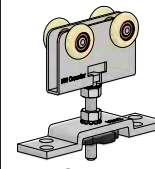


**CDC-411
Catch/Stop (2)**



**#10 x 2-1/4"
Self-Drilling Screw (2)**
[FT6]

Compatible with:



**C-411
Hanger**



C-400 Track



C-412 Track



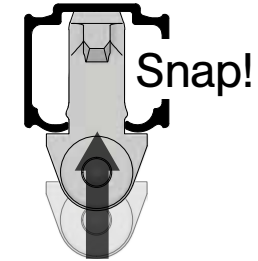
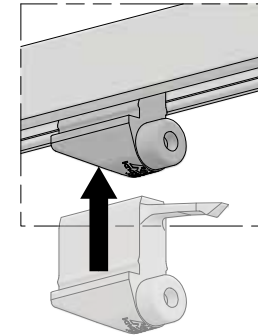
C-538 Track



C-500 Track

Step #1:

After door has been installed, snap CDC-411 Catch/Stops into each end of track with bumpers facing towards center of track. Once snapped into track, CDC-411 Catch/Stops should be free to slide within track.



Step #2:

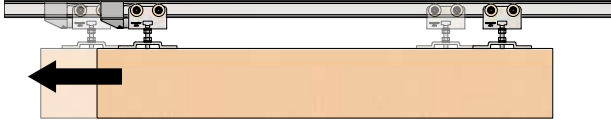
Position door approximately 5-10 in [127-254 mm] away from final position at one end, shown right with left side. Push loose CDC-411 Catch/Stop against hanger and engage it with hanger. Bumper should be against hanger body.



Step #3:

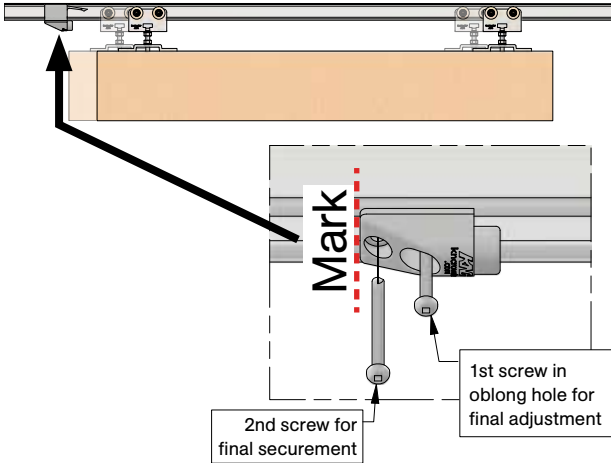
With CDC-411 Catch/Stop loose, slide door to final/desired position.

Note: Ensure that strike and any finishing trim thicknesses are taken into consideration for final/desired position of door.

**Step #4:**

Once final position is achieved, mark outside edge of CDC-411 Catch/Stop as shown below, disengage CDC-411 Catch/Stop from hanger and slide door back. Position CDC-411 Catch/Stop at mark and secure with one (1) #10 x 2-1/4" Self-Drilling Screw [FT6] in oblong hole. Recheck door position and adjust CDC-411 Catch/Stop if necessary before securing in second hole with #10 x 2-1/4" Self-Drilling Screw [FT6].

Note: Remove any drill fillings from inside of track as this will affect operation of sliding door system.

**Step #5:**

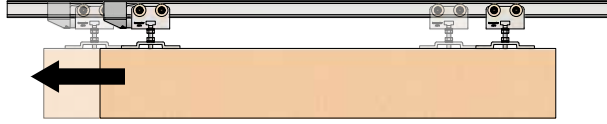
Repeat **steps #2 - 4** for opposite CDC-411 Catch/Stop.

Note: Ensure that strike and any finishing trim thicknesses are taken into consideration for final/desired position of door.

Step #3:

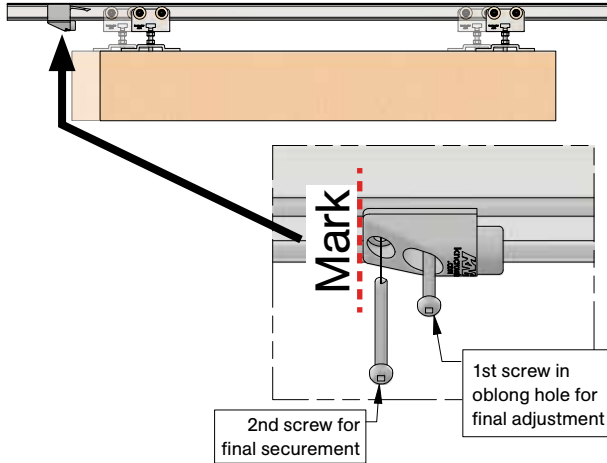
With CDC-411 Catch/Stop loose, slide door to final/desired position.

Note: Ensure that strike and any finishing trim thicknesses are taken into consideration for final/desired position of door.

**Step #4:**

Once final position is achieved, mark outside edge of CDC-411 Catch/Stop as shown below, disengage CDC-411 Catch/Stop from hanger and slide door back. Position CDC-411 Catch/Stop at mark and secure with one (1) #10 x 2-1/4" Self-Drilling Screw [FT6] in oblong hole. Recheck door position and adjust CDC-411 Catch/Stop if necessary before securing in second hole with #10 x 2-1/4" Self-Drilling Screw [FT6].

Note: Remove any drill fillings from inside of track as this will affect operation of sliding door system.

**Step #5:**

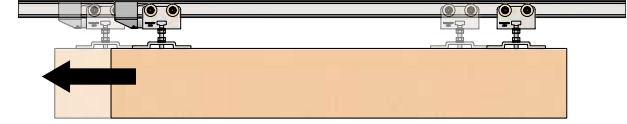
Repeat **steps #2 - 4** for opposite CDC-411 Catch/Stop.

Note: Ensure that strike and any finishing trim thicknesses are taken into consideration for final/desired position of door.

Step #3:

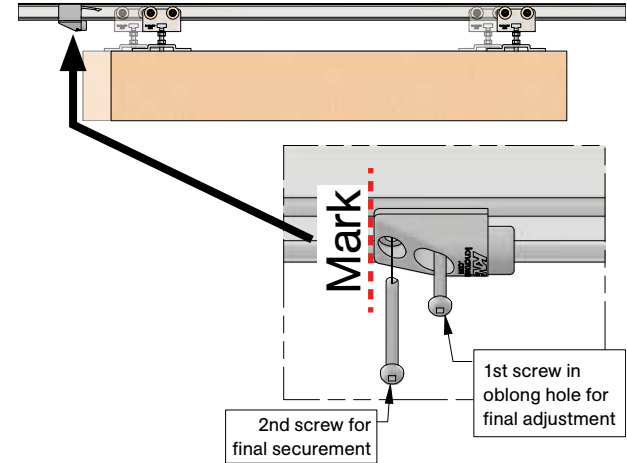
With CDC-411 Catch/Stop loose, slide door to final/desired position.

Note: Ensure that strike and any finishing trim thicknesses are taken into consideration for final/desired position of door.

**Step #4:**

Once final position is achieved, mark outside edge of CDC-411 Catch/Stop as shown below, disengage CDC-411 Catch/Stop from hanger and slide door back. Position CDC-411 Catch/Stop at mark and secure with one (1) #10 x 2-1/4" Self-Drilling Screw [FT6] in oblong hole. Recheck door position and adjust CDC-411 Catch/Stop if necessary before securing in second hole with #10 x 2-1/4" Self-Drilling Screw [FT6].

Note: Remove any drill fillings from inside of track as this will affect operation of sliding door system.

**Step #5:**

Repeat **steps #2 - 4** for opposite CDC-411 Catch/Stop.

Note: Ensure that strike and any finishing trim thicknesses are taken into consideration for final/desired position of door.