

# CRT-SP

## Single Round Bar Door Pull

Installation Instructions

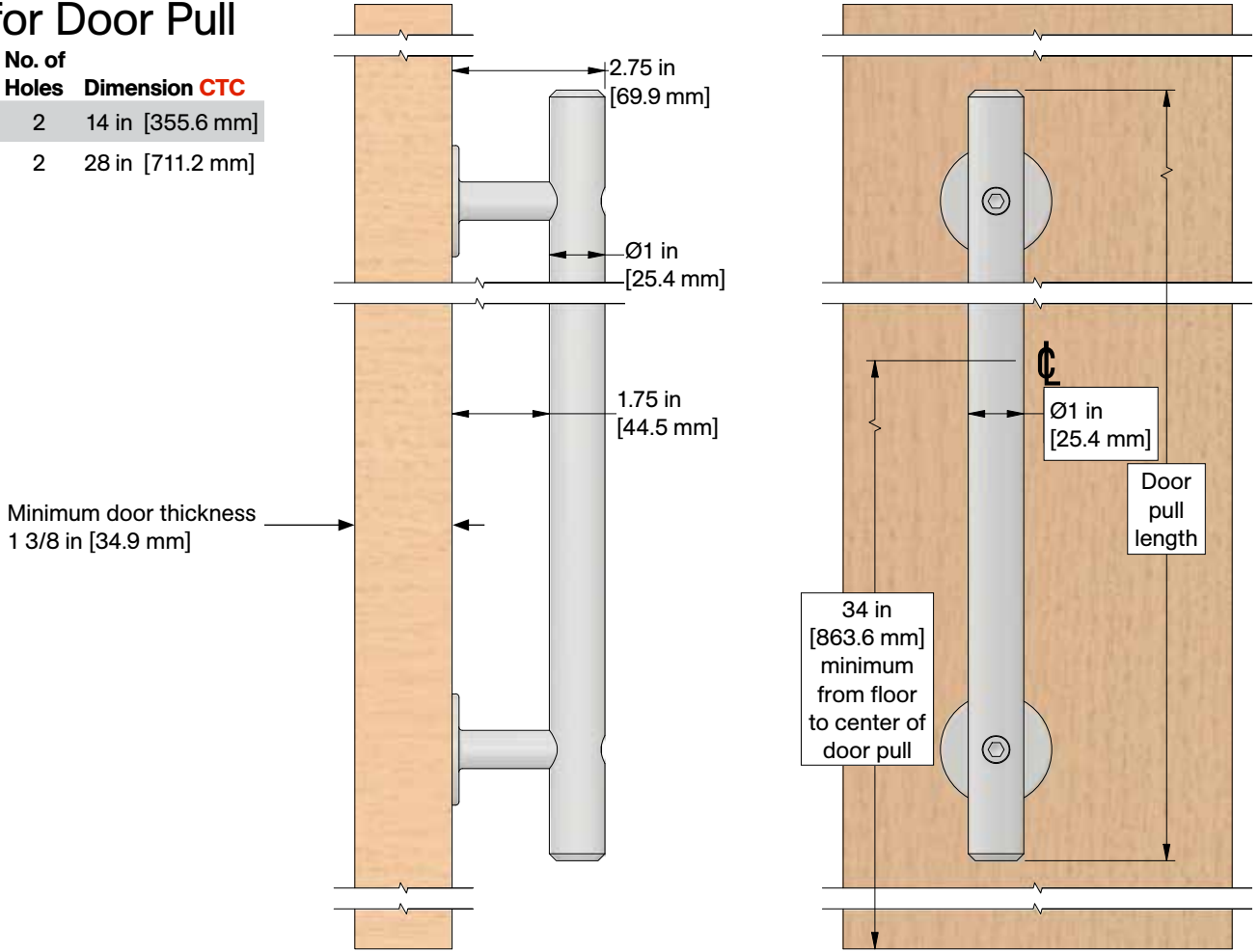
**Door Thickness:** 1 3/8 in [34.9 mm] minimum

Available in Ø1 in [25.4 mm] x 18 in [457.2 mm] or 36 in [914.4 mm] round bar door pull

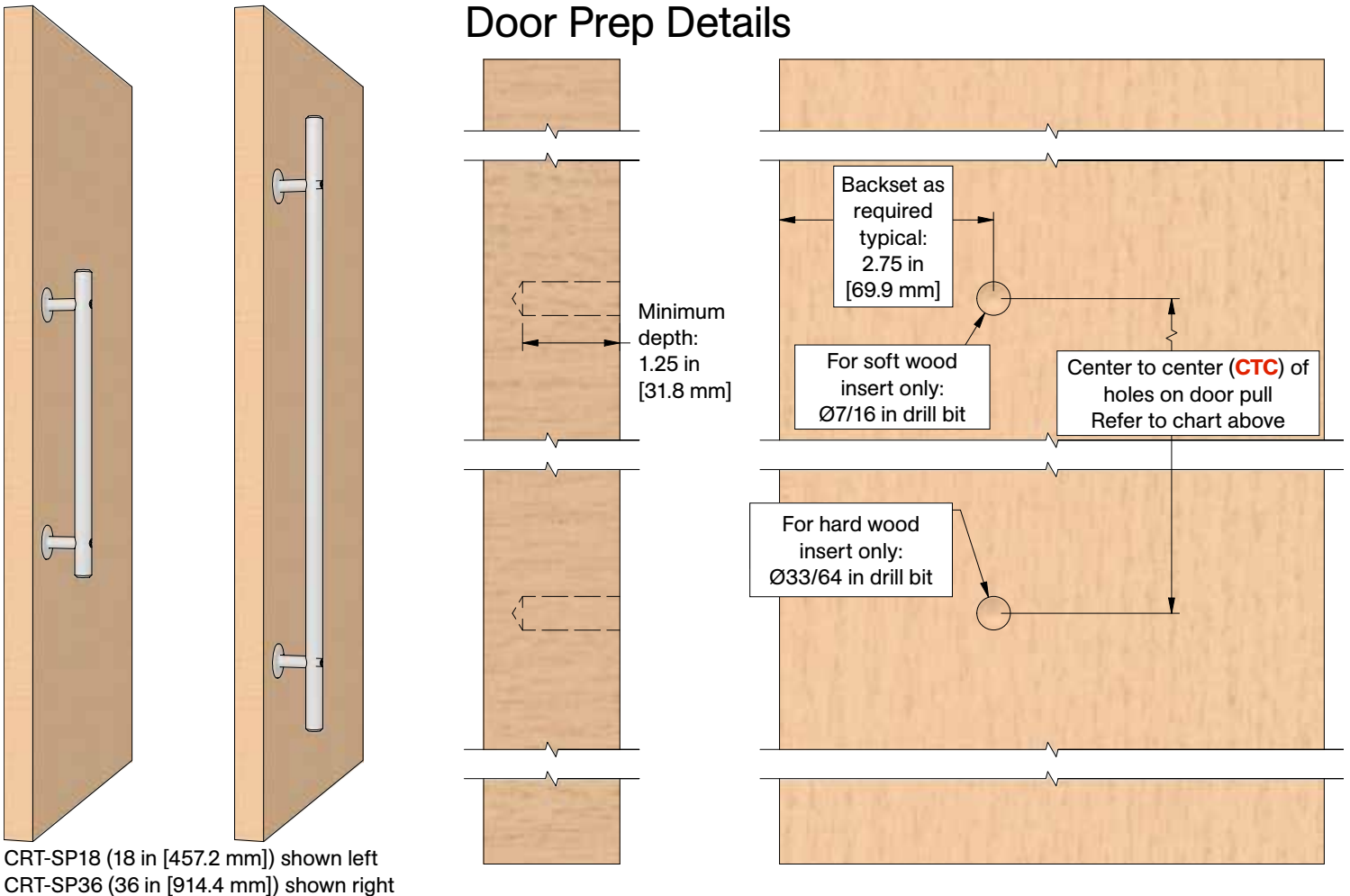
### Center to Center Hole Spacing for Door Pull

Overall Pull Length	No. of Holes	Dimension CTC
18 in [457.2 mm]	2	14 in [355.6 mm]
36 in [914.4 mm]	2	28 in [711.2 mm]

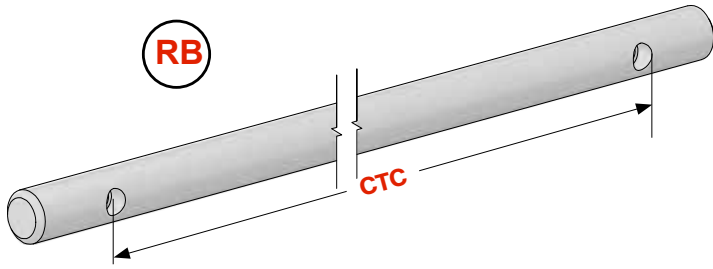
### Product Dimension Details



### Door Prep Details



# Parts List



**CRT-RBDP-[door pull length] Round Bar Door Pull (1)**  
Door pull length, see chart right

## Center to Center Hole Spacing for Door Pull

Overall Pull Length	No. of Holes	Dimension CTC
18 in [457.2 mm]	2	14 in [355.6 mm]
36 in [914.4 mm]	2	28 in [711.2 mm]

**SWI**



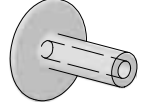
5/16-18 Soft Wood Flange Anchor (2)

**or HWI**



5/16-18 Hard Wood Knife Anchor (2)

**C**



**CRT-DPB-C (2)**

Door pull bracket Type C, clearance hole through

**SC**



5/16 18 x 3 1/2" Socket Head Cap Screw (2)

# Assembly

