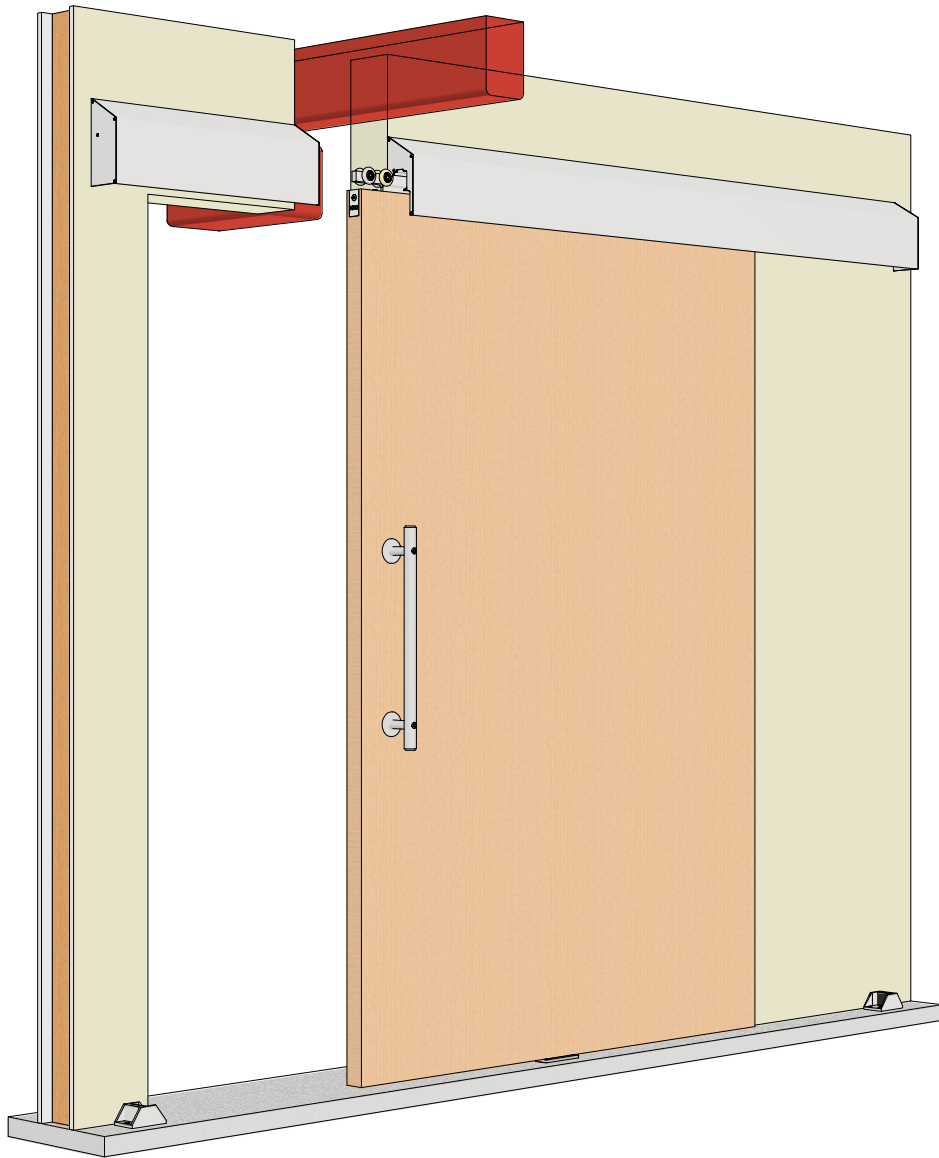


# CROWDER CANTILEVER

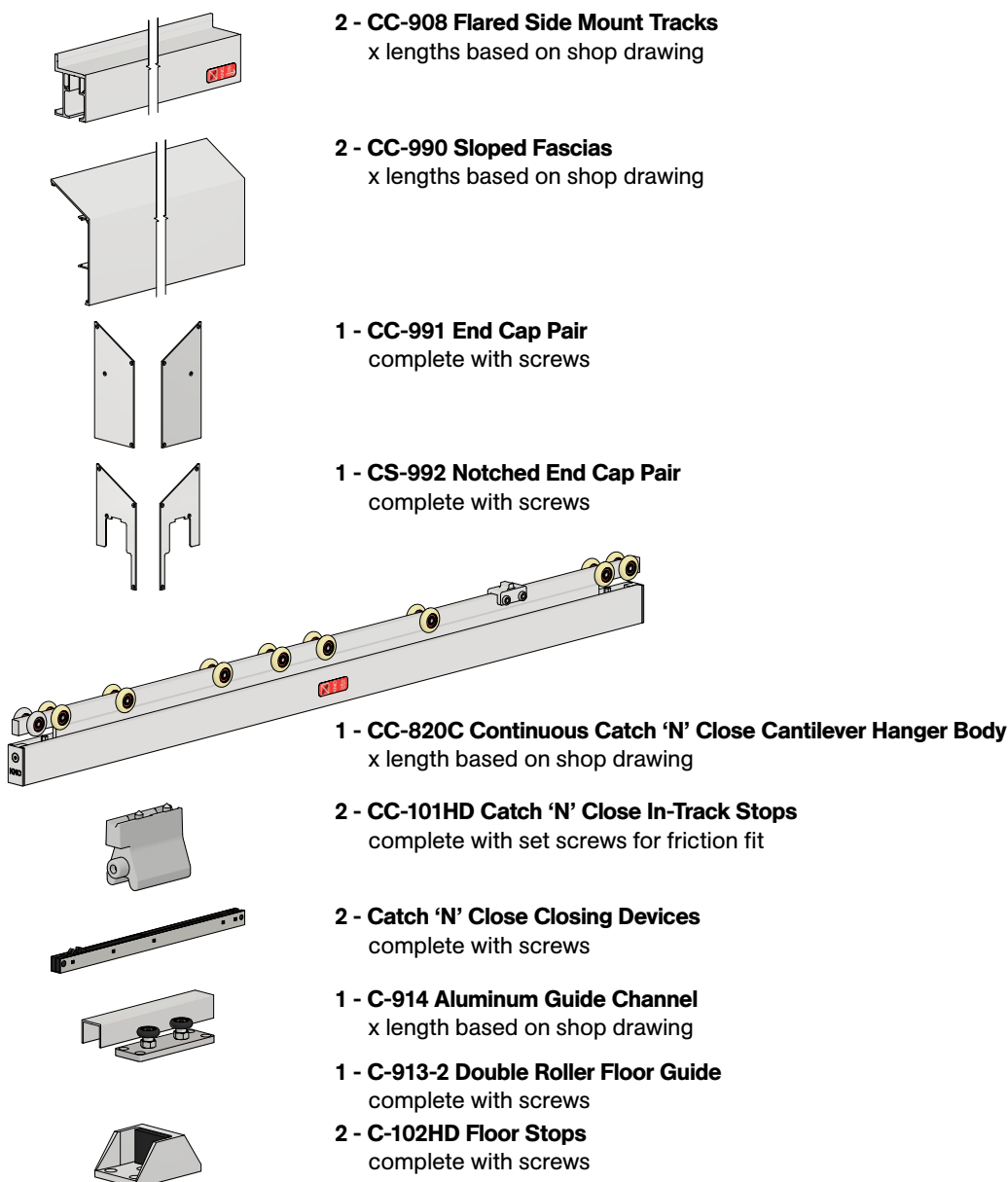
## Sloped Side Mount



### FEATURES

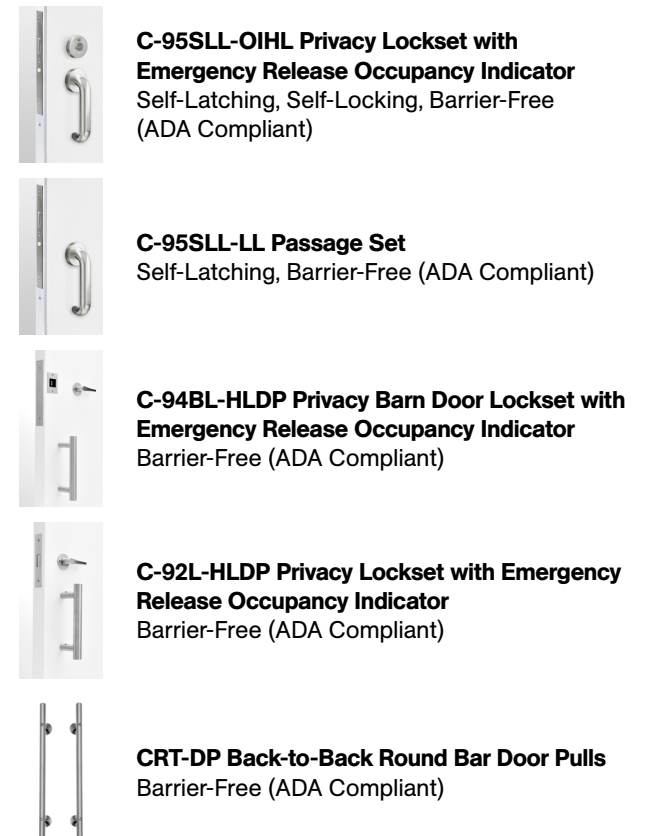
- Designed to allow patient lift systems to seamlessly travel across doorways from one room to the next, ensuring uninterrupted operation in hospitals and assisted living facilities
- Allows sliding doors to travel across a gap in the track up to 16 in [406 mm]
- 300 lbs. [136 kg] weight capacity
- Effortless opening and closing of the door with the Catch 'N' Close Closing System
- Angled fascia design to reduce collection of dust and facilitate cleaning
- Nylon wheels and precision ball bearings provide smooth and quiet door operation
- Flared tracks at gap ease the transition for the door crossing over
- Leading stainless steel tire on hanger for increased durability when crossing gap
- Heavy-duty double roller floor guide system ensures stability
- 3/8 in [9 mm] hanger adjustability
- Adjustable in-track stops
- Handed openings
- Cycle tested for up to 150,000 cycles without fail
- ADA Compliant (Barrier-free) design
- Available in clear or black anodized, mill finish or powder coated
- Minimum 1 3/4 in [44.5 mm] thick doors

### COMPLETE 1 DOOR KIT BREAKDOWN



### OPTIONAL

#### Door Locks & Pulls



Customer Name

Job No./Name

Date

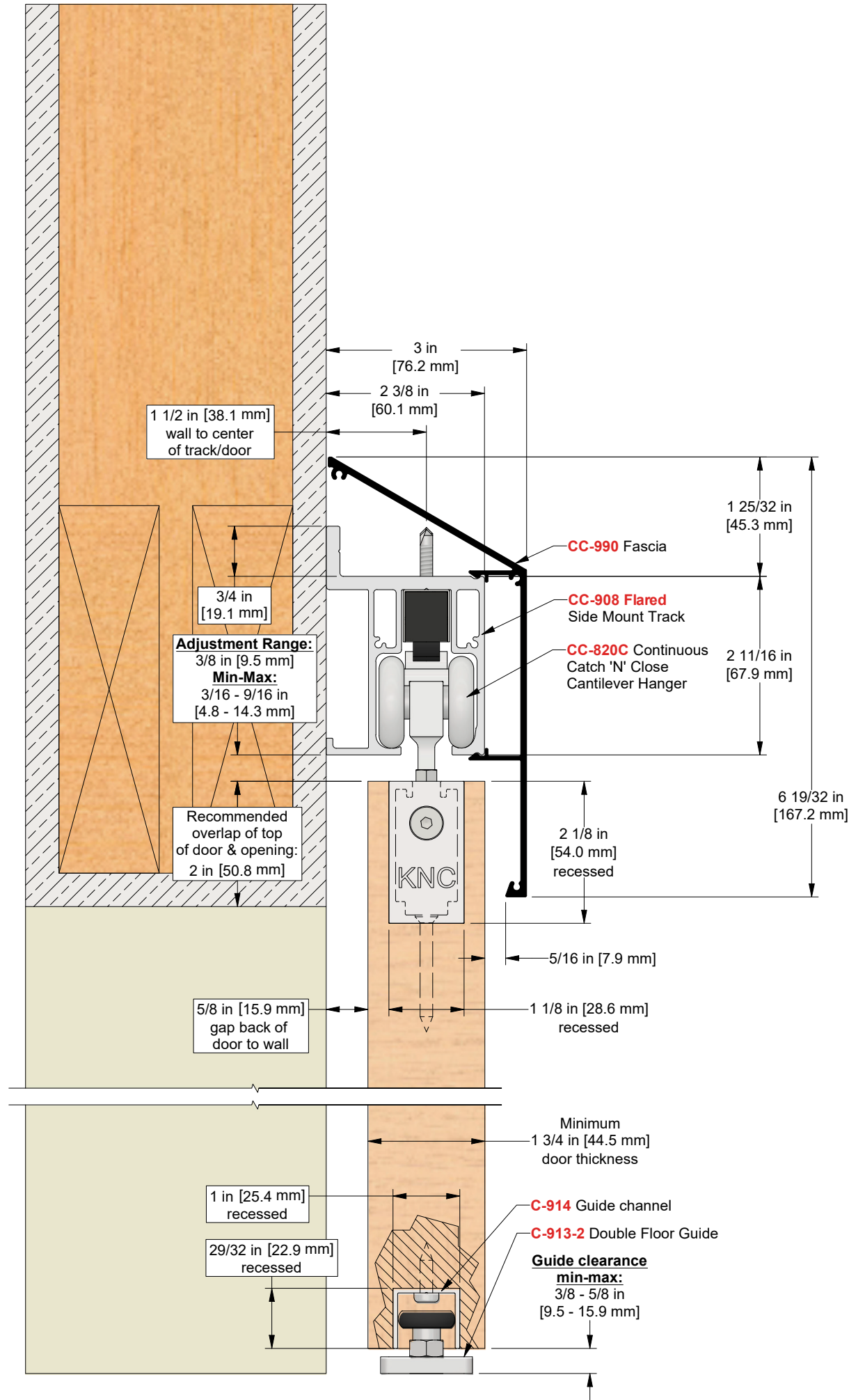
Provided By

Notes

# CROWDER CANTILEVER

Sloped Side Mount

## SECTION VIEW



Customer Name

Job No./Name

Date

Provided By

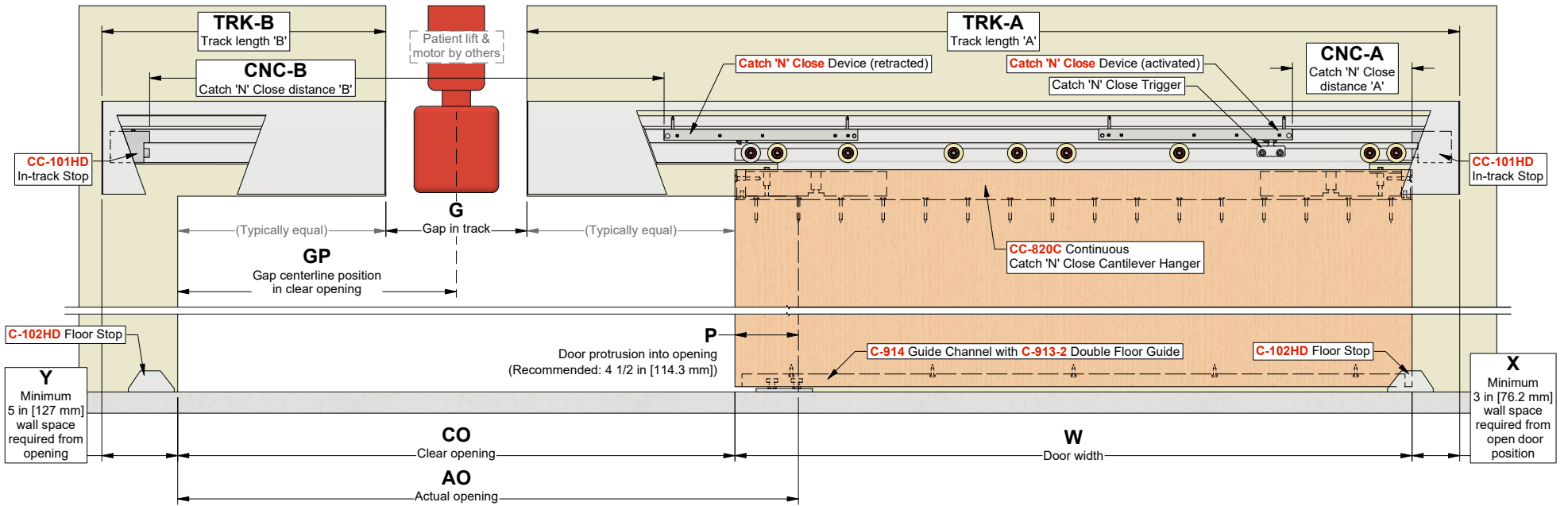
Notes

# CROWDER CANTILEVER

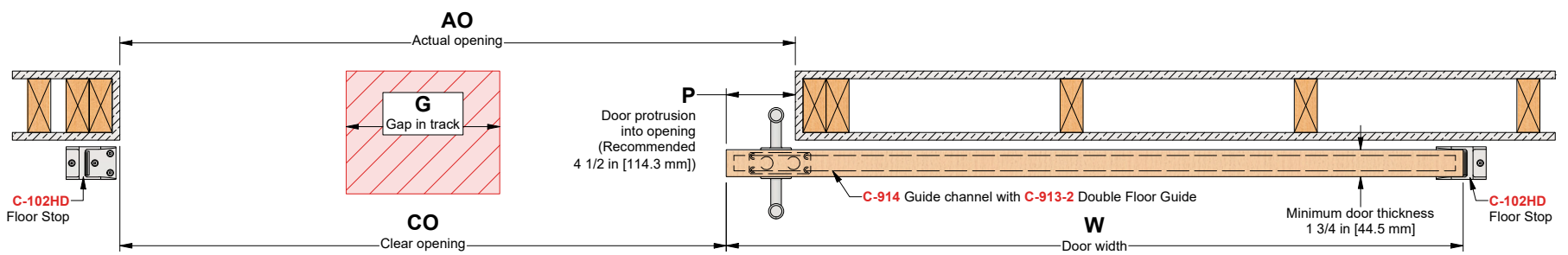
## Sloped Side Mount



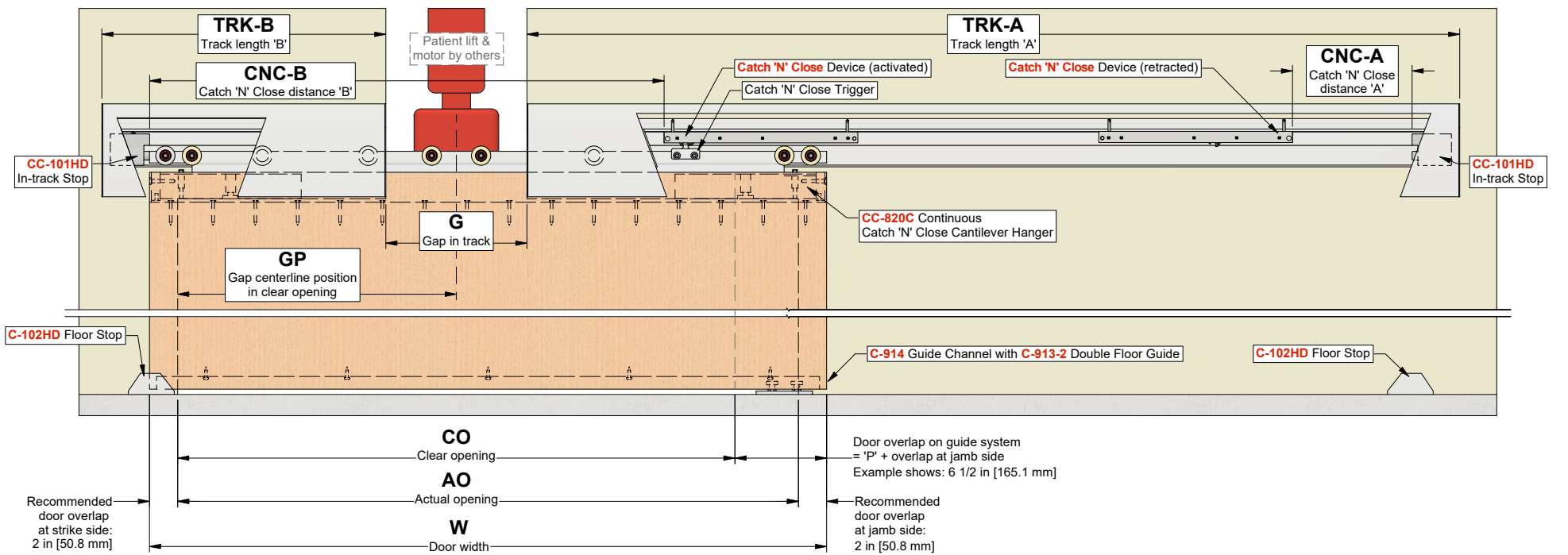
### ELEVATION VIEW - OPEN POSITION



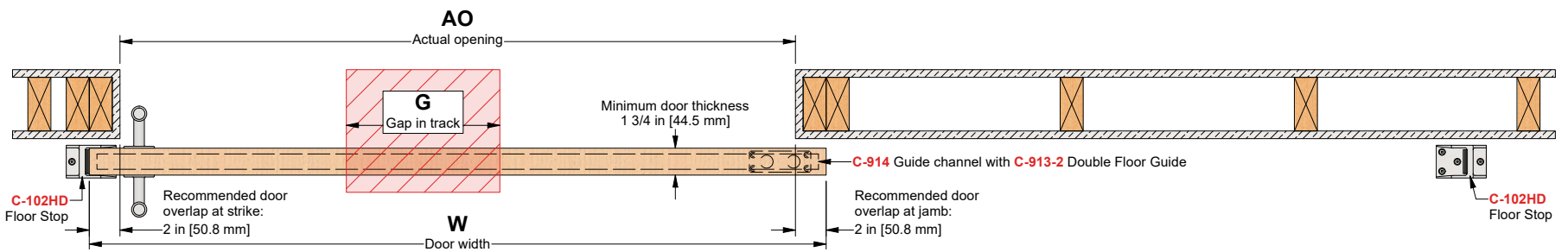
### PLAN VIEW - OPEN POSITION



### ELEVATION VIEW - CLOSED POSITION



### PLAN VIEW - CLOSED POSITION



Customer Name \_\_\_\_\_ Job No./Name \_\_\_\_\_ Date \_\_\_\_\_ Provided By \_\_\_\_\_

Notes